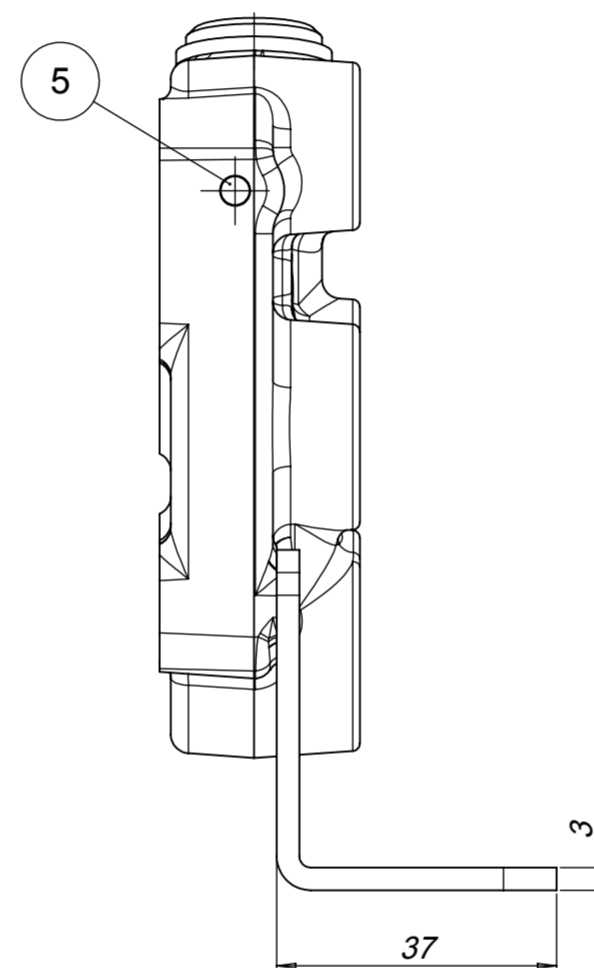
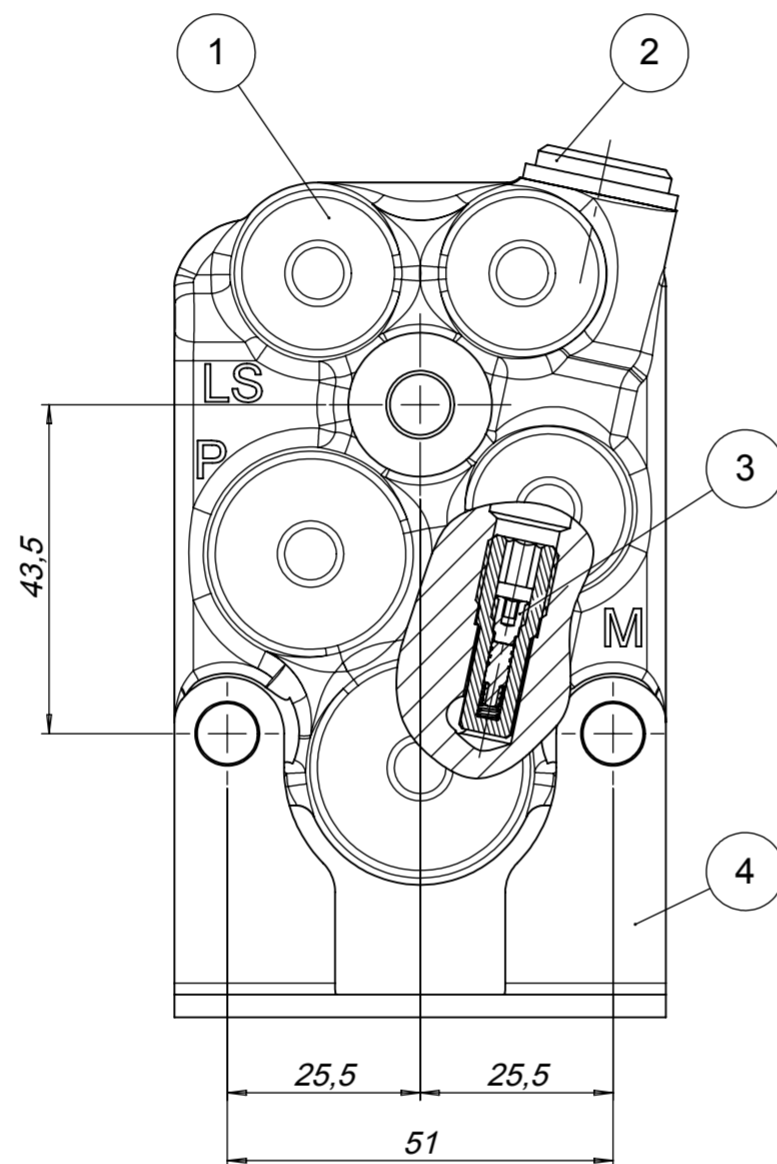
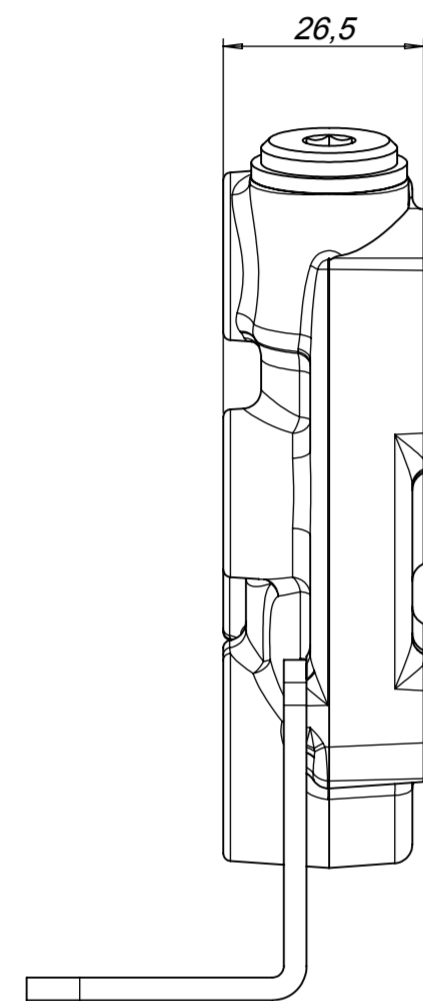
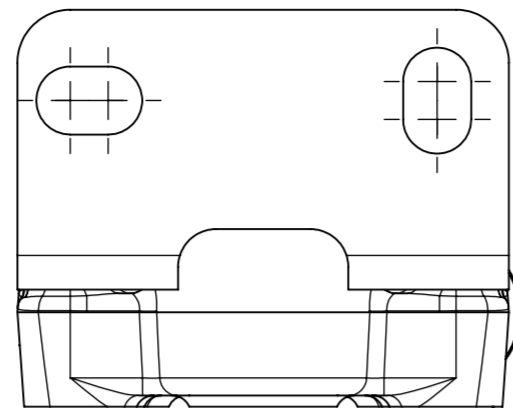
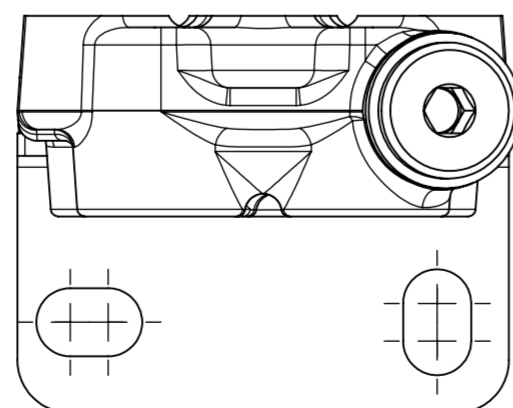
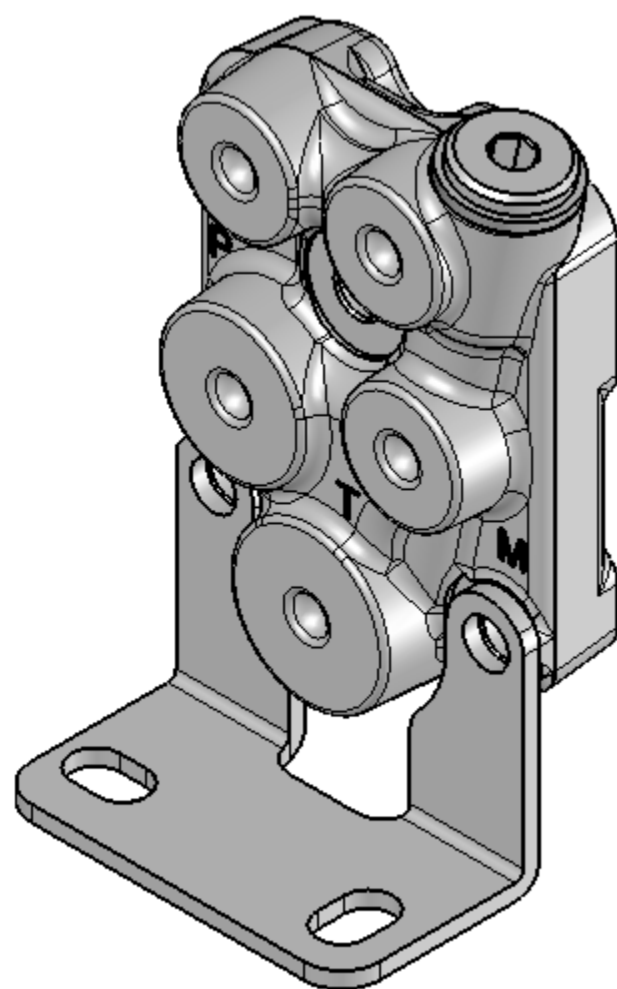
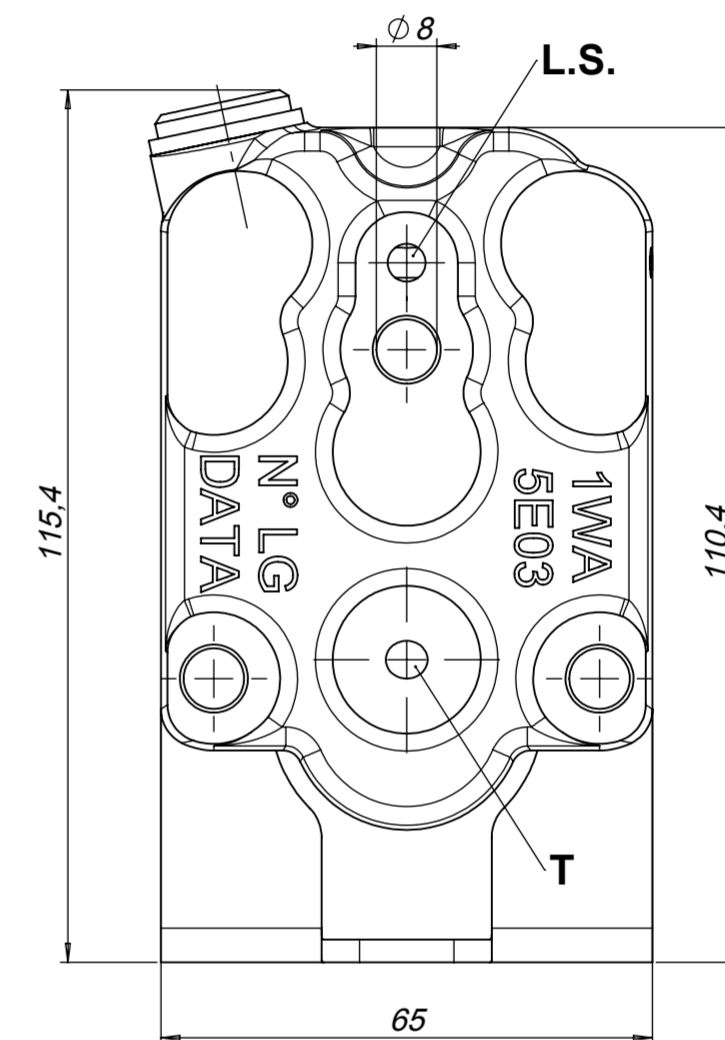
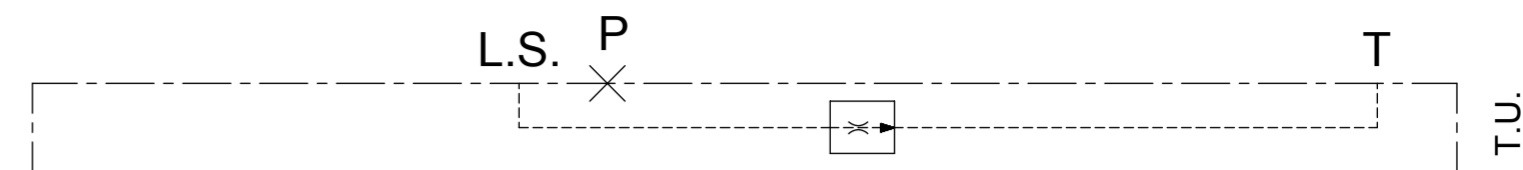


NOTA / NOTE
 PROTETTO SUPERFICIALMENTE
 SURFACE PROTECTION



HYDRAULIC SCHEMA



N.	Codice / Code	Q.tà / Q.ty	Descrizione	Description
1	DO4WC5E0006Z0	1	PIASTRA DI CHIUSURA LSC40 L.S A SCARICO - ZINCATA	END PLATE LSC40 L.S. - T - ZINKED
2	DO587201401	1	TAPPO 1/4"GAS	PLUG 1/4"GAS
3	DOWFC00018000	1	VALVOLA FUGA COMPENSATA 1/8G 2-1 0.5mm	COMPENSATED BLEEDING VALVE 1/8G 2-1 0.5mm
4	DO2930405E10	1	STAFFA SOSTEGNO BW05 3mm STANDARD	BW05 SUPPORT BRACKET 3mm STANDARD
5	DO36701004	1	EXPANDER SK 550-040	EXPANDER SK 550-040

CODICE CLIENTE / CUSTOMER CODE		CLIENTE / CUSTOMER		TIPO DI MACCHINA / TYPE OF IMPLEMENT		RIF. CLIENTE / CUSTOMER REFERENCE	
DESCRIZIONE PIASTRA DI CHIUSURA LSC40 - L.S A SCARICO CON CARTUCCIA DI FUGA + STAFFA - ZINCATA DESCRIPTION END PLATE LSC40 L.S. + BRACKET - L.S. WITH BLEEDING - ZINKED							
CODICE CONFIGURAZIONE / CONFIGURATION CODE						CODICE DFMEA / DFMEA CODE	
Massimo livello di contaminazione dell'olio ammesso secondo ISO 4406 Maximum allowable oil contamination level according to ISO 4406		17/15/12		MASSA / MASS kg S. GALVAN DATA / DATE 14-07-2016		PAG. 1 / 1 CODICE / PART NUMBER DO6DC5P000015R	
REV. 0							